

High energy efficiency
Effortless charging
Easy installation and minimal maintenance
Advanced service support

JC-9A31-30-CX (CE)
JC-9A31-30-CT (UL)



Key Features

CE, cMETus(NRTL/CSA), FCC Compliant
CTEP/NTEP, Energy Star Compliant (Q3 2023)
Networked or Non-Networked charger
Remote monitoring and update for optimal operation
Fits all CCS vehicles

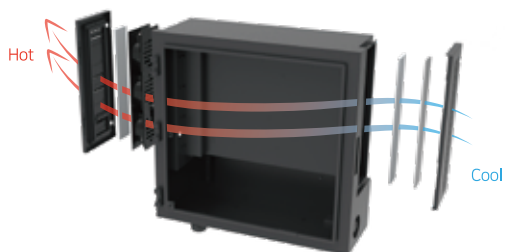
DC charger 30kW at a glance



Specifications

General	Connector	CCS
	Communication with EV	IEC 61851 PLC
	Display	12.1" LCD Display, Touch screen
	Support language	English (Other languages available upon request)
	Push buttons	1 emergency stop button
	User authentication	ISO/IEC 14443 A / B Mifare RFID reader, Credit card reader
Electric	Input	3Ø4W, 400VAC, 50/60Hz, Max.33kVA (CE Version) 3Ø4W, 480VAC, 60Hz, Max.33kVA (UL Version)
	Input THD	< 5%
	Output	Voltage : 150~1,000VDC(Max) Current : 80A(Max) Max power : 30kW
	Power factor	> 0.96 (Full Scale)
	Charging mode	CC, CV
	Voltage accuracy	±1.0% (Full Scale)
	Current accuracy	±1.0% (Full Scale)
	Max. efficiency	> 94% (at rated voltage, rated current)
	Isolation impedance	10MΩ@1,000V
	Environment	Operating temperature
Humidity		< RH95% (Non-condensing)
Communication	Network interface	Ethernet, Cellular, WLAN
	Protocol	OCPP1.6J (OCPP 2.0.1 will be supported in 2024)
Safety standard	Protection	Over voltage, Over current, Short-circuit, Over temperature, Earth leakage, Surge protection, Contactor welding
Mechanical	Protection degree	IP54 (NEMA 3R), IK10
	Cooling	Forced air
	Charging cable length (Standard)	6m (19.7ft) / Adjustable upon request
	Dimension	650(W) x 622.4(H) x 325.1(D) mm (25.6(W) x 24.5(H) x 12.8(D) inch)
	Weight	91kg (200lb)

Feature highlights



Advanced internal design creates airflow between power modules to solve heat generation problem



Front and side doors can be opened for maintenance



Can also be installed on walls or stand poles (optional)

